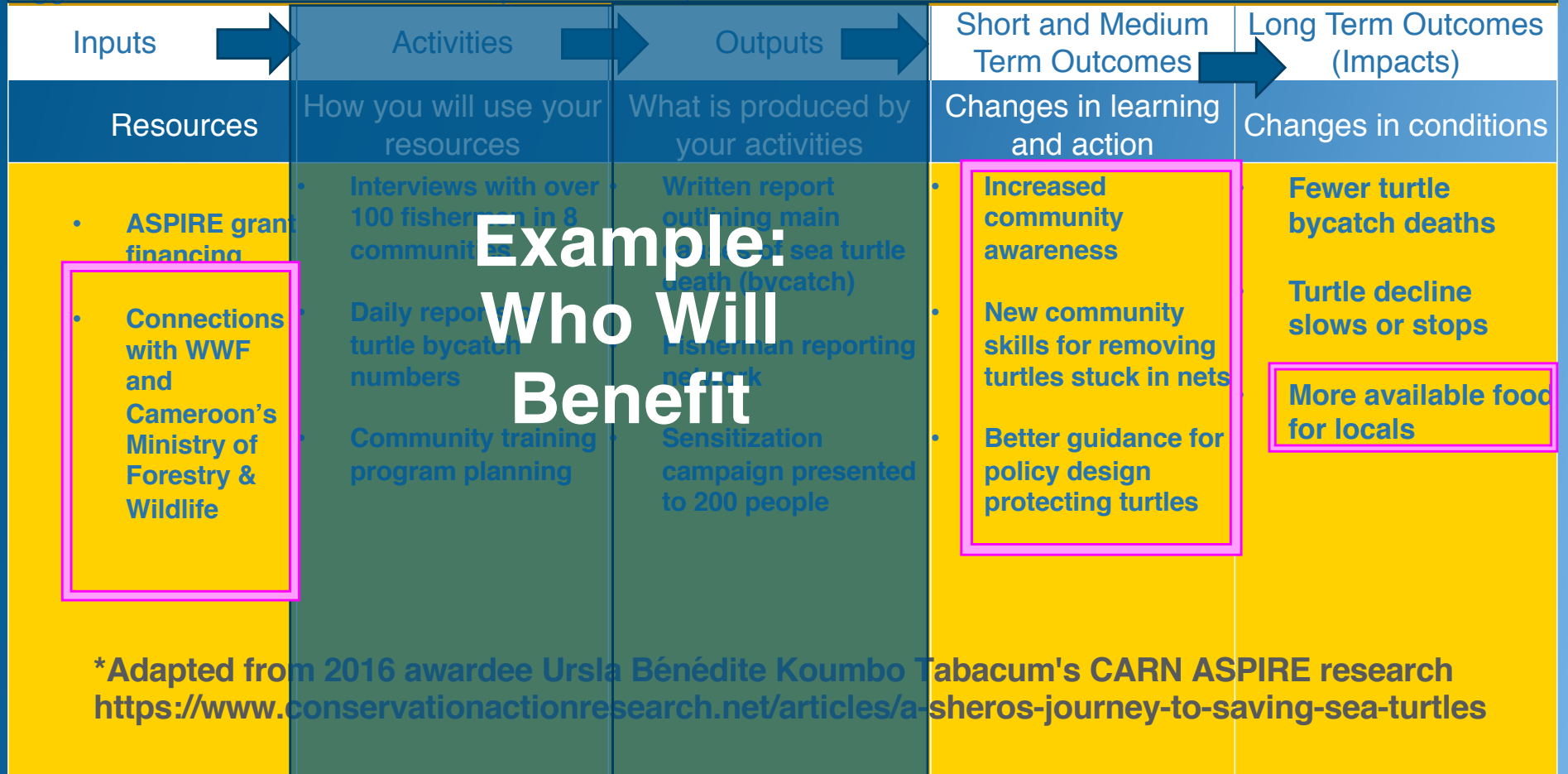


Instructor Note: To facilitate understanding, I have provided two different examples from two different projects. This first page shows how your “Who Will Benefit” section maps onto the ToC logic model you created, while the second page shows an example of what a fully completed “Who Will Benefit” section would look like in your grant submission. The two examples both come from real ASPIRE awardees, but are otherwise unrelated.

Problem statement: Over half of central Africa’s sea turtles are considered threatened or endangered, yet their biggest threats are unclear. These species are important food sources for locals.



Who Will Benefit - Written Example



Beneficiaries will include cocoa farmers in the region. From our previous research, we have existing relationships with 10 cocoa farms in the west region of Cameroon (these are the same locations at which we will conduct the research for this project). These farmers see the value of preserving bird species as a means of biological pest control for their cocoa crops and have thus indicated their interest in participating in the conservation effort. Additionally, they have existing positive relationships with other farmers not directly included in our study, and have indicated willingness to share their learnings and/or connect us in the future.

Inspired by 2022 awardee Mélanie Adèle Tchoumbou's project: <https://www.conservationactionresearch.net/projects/which-native-shade-trees-will-attract-pest-eating-birds-to-cameroonian-cocoa-farms>